



# LOG READER PROGRAM

User Manual

## Contents

1.LOG Reader Program .....	3
2. Connection .....	3
2.1 Connection - TCP .....	3
2.2 Connection – Serial .....	4
3. Settings.....	5
3.1 Access Settings .....	5
3.2 Connection Settings .....	6
3.3 Report Settings.....	7
3.4 Company Settings .....	8
3.5 Devices.....	9
4. Language Change .....	10
5. Device Information and Inquiry.....	11
5.1 Report Screen .....	12
6. Connection Problems .....	13

# 1.LOG Reader Program

Log reader program is a program which;

- Event
- Profile (Energy)
- Power
- Voltage
- Current
- Total Harmonic Distortion (THD)
- Temperature logs can be logged by connecting serial or TCP to ENTES devices that have log holding feature according to the device information and the competence of the device



## Warning

*Log reader program works according to the correct date of the read logs. If the date of the device is set incorrectly and even if it is corrected later, log reader program cannot give report because the recording dates are not sequential.*

*In case of erroneous log reading, the logs in the memory should be waived in order for the program to work properly.*

*If the device is reset with returning to factory settings and the device is started by entering correct date, the log reader program will run.*

## 2. Connection

### 2.1 Connection - TCP

The connection screen for a device with TCP/IP connection is as follows.

**Connection Name:** Once connected to the device, the relevant information will be saved in the database. Connection information is recorded in the database with the name in this field. A list of previously saved links is displayed from the list here.

Device connection to be done;

- If there is a previously registered connection, you can proceed directly by selecting that connection name.
- If a new connection will be established, this field is followed by typing the name to be given to the link.

**Connection Type:** TCP/IP and Serial connections can be selected. TCP/IP should be selected in this case.

**IP Address:** It shows IP address of the device you want to connect. IP address information can be displayed from the menu on the some of our devices.

**TCP Port:** If the factory setting of the devices or port has not been changed, 502 must be selected. If changes are made, the changed port value must be entered.

**NAD:** NAD address of the device must be entered here.



## Warning

*When the device cannot be connected, IP Address, TCP Port and NAD should be checked at first.*

## 2.2 Connection – Serial

The connection screen for a device with serial connection is as follows.

**Connection Name:** Once connected to the device, the relevant information will be saved in the database. Connection information is recorded in the database with the name in this field. A list of previously saved links is displayed from the list here.

Device connection to be done;

- If there is a previously registered connection, you can proceed directly by selecting that connection name.
- If a new connection will be established, this field is followed by typing the name to be given to the link

- Connection Type:** TCP/IP and Serial connections can be selected. Serial should be selected in this case.
- Communication Port:** It is necessary to choose which serial port is used in the machine with serial connection.
- Baud Rate:** It shows the data bandwidth. If the device's factory setting has not been changed, it should be set to 9600 bps. If a change has been made, the changed value must be set.
- Data Bit:** This information is standard for ENTES devices, do not change this information unless our company publishes any changes about it.
- Stop Bit:** This information is standard for ENTES devices, do not change this information unless our company publishes any changes about it.
- Parity:** This information is standard for ENTES devices, do not change this information unless our company publishes any changes about it.
- NAD:** NAD address of the device must be entered here.



## Warning

*When the device cannot be connected, Communication Port and Bandwidth should be checked at first.*

## 3. Settings

### 3.1 Access Settings

If the program is desired to be used with password protection, it can be set in "Access Settings". In order to enter the screen below, the button at the left side of the main screen must be clicked.

The screenshot shows the 'All Log Reader' application window with the 'Settings' dialog box open. The 'Access Settings' tab is active, featuring a key icon and a 'Password Protected' checkbox. Below the checkbox are three text input fields for 'Current Password', 'New Password', and 'Reenter New Password'. An 'Apply' button is positioned below these fields. At the bottom of the dialog are 'Save' and 'Close' buttons. The window title bar includes the text 'All Log Reader' and standard window controls. The settings dialog also displays the version 'V 2.2.0.9317' and a language selection bar with flags for Turkish, English, German, Italian, and Spanish.

**Password Protected:** If the password protection is required, this section should be marked. If this part is marked and the password is set, the password will be asked every time the program is opened. If the password is entered incorrectly, the program will not open.



## Warning

*There is no reminder mechanism for the forgotten password.*

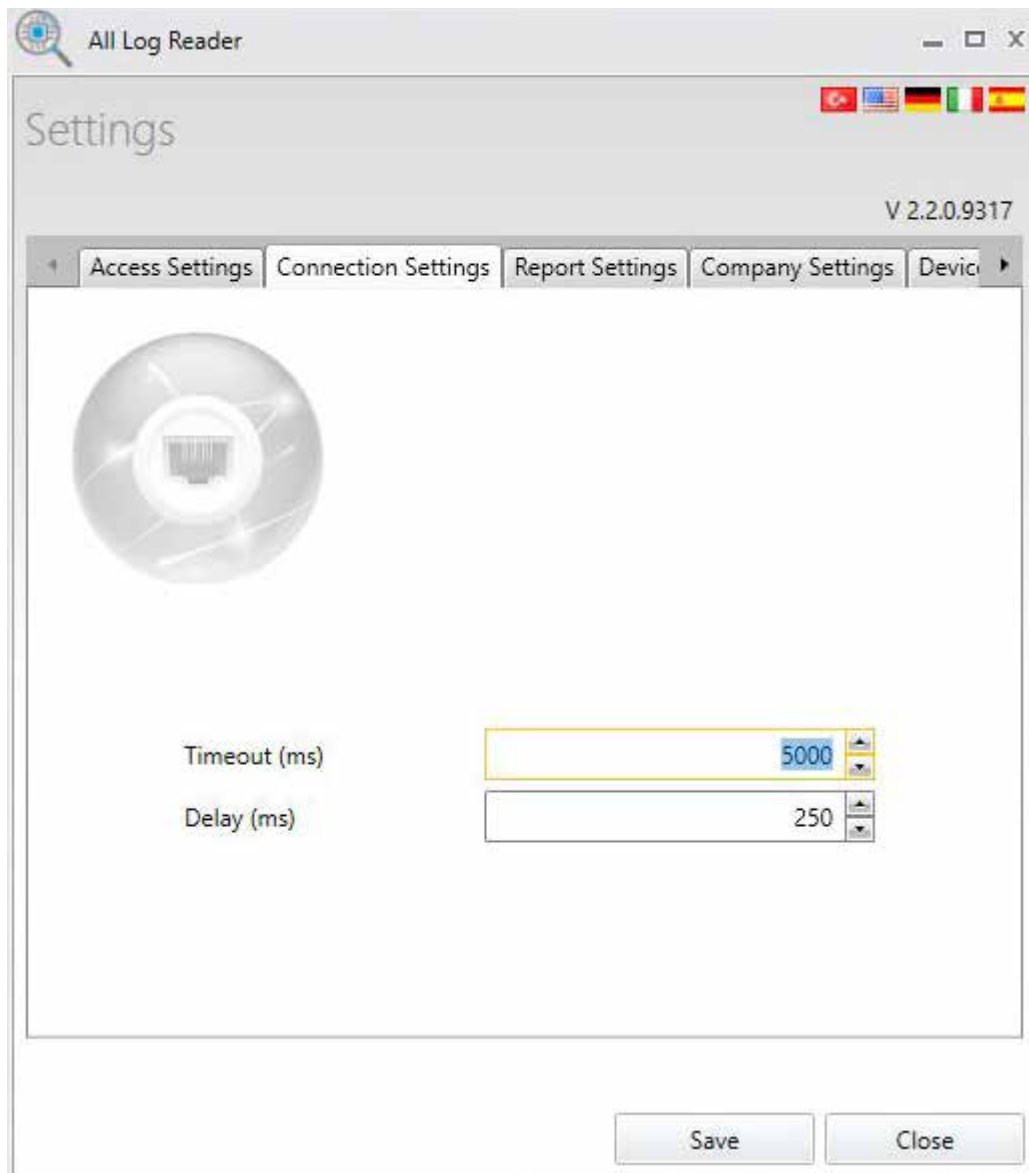
**Current Password:** If the password has been created before, the current password must be entered. If it is the first time that password assignment is made, this section should be left blank.

**New Password:** The new password must be entered.

**Reenter New Password:** The new password must be re-entered for control purposes.

## 3.2 Connection Settings

It is the screen that timeout and delay settings related to the connection.



**Timeout:** It is expected time for connection to the device. After the connection request is sent to the device, it is waited for the specified time to respond to the connection request.

5.000 ms is an ideal time. It works in all situations where the connection quality is high – medium level. In cases where the connection quality is low – very low, you can increase the timeout period up to 10.000 ms.

**Delay:** If the device cannot be connected, it is the expected time to try connecting again.

250 ms is an ideal time. It works in all situations where the connection quality is high – medium level. In cases where the connection quality is low – very low, you can increase the timeout period up to 500 ms

## Important

If you can not connect to the device and your connection settings on the main screen are correct, you should check the settings in this section.

You can try reconnecting by gradually increasing the settings in this section. There is no upper limit for these settings, but the more you increase the longer you wait for the connection.

Theoretically if you cannot connect to the device with a timeout of 10.000 ms and a delay of 500 ms, increasing these values will not help the connection.

## Important

The values in this section are not required for the first connection. Please note that the log reading process may take a long time according to the time interval you choose (for example, when you want to get 1-year logs on the device).

During the long reading process, it sends many Modbus queries to the devices, once for each log. It should be noted that timeout and delay times entered in this section are used in every query (log reading process).

**For example**, it should not be forgotten that if a device that works very easily with 100 ms delay is given a duration of 500 ms in order to not have a problem in connection, the log reading process will take longer as the same length

### 3.3 Report Settings

The settings related to the reports to be taken are made in this screen.



**Browse:** The directory where the reports will be saved is selected with this button.

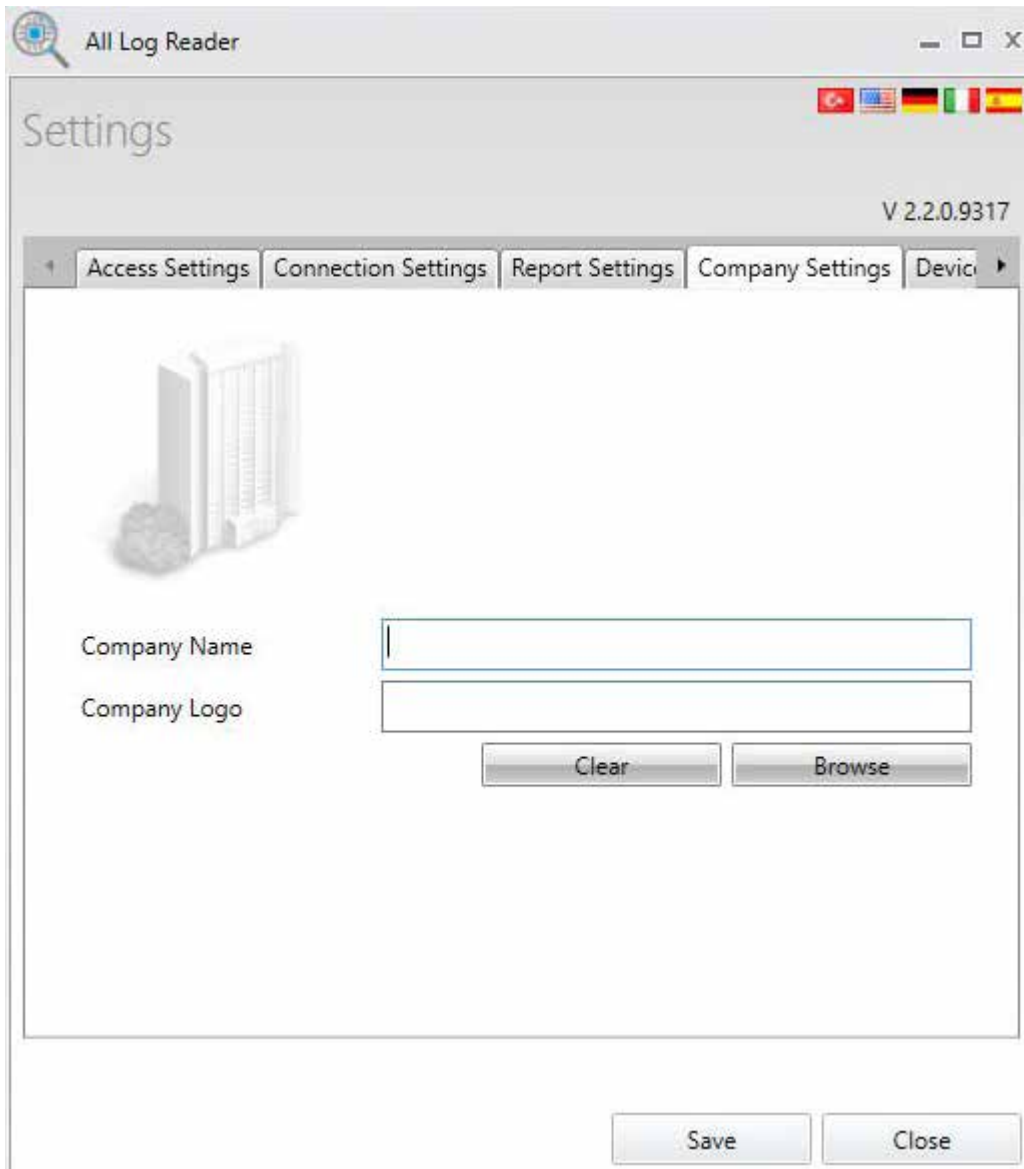
**Template Files:** The directory where the template files used to create the reports are kept can be accessed here.

**Output Type:** The output type that the program will create is selected from this section. The program gives output in 3 different formats: csv, xlsx and pdf. By default, xsls is selected.

**Open the file after successful save:** If the files are to be opened automatically after the program gives output, this section should be selected. By default, this section comes selected.

### 3.4 Company Settings

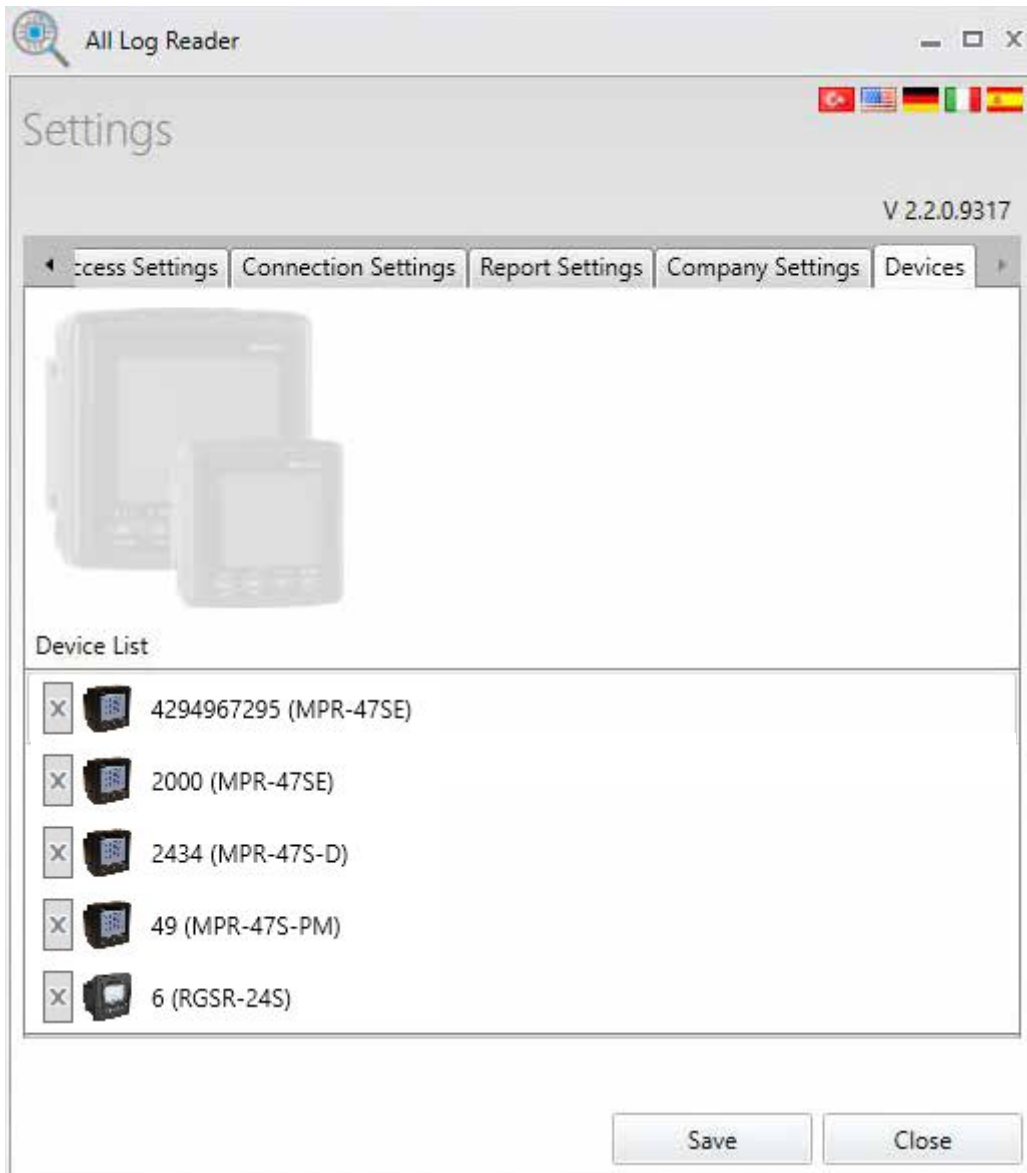
You can add company name and logo information to appear in the program in this screen.





### 3.5 Devices

The list of previously connected devices is displayed in this screen.



## 4. Language Change



Language change is set from the country flags on the right of the main screen of the program. Turkish, English, German, Italian and Spanish languages can be selected.

The language of the program changes after the language selection without having to close and opening the program. When the program is closed and opened, the program from the last registered language continue to run.

## 5. Device Information and Inquiry

Information about the connected device, sample picture of the device and the details about the query are displayed in this screen.

The screenshot shows the 'All Log Reader' application window. The title bar reads 'All Log Reader'. The main content area is titled 'Device Info' and features a sample image of a black device with a digital display showing '0000'. To the right of the image is a table of device information:

Name	MPR47-SE
Serial Number	2000
Model	MPR-47SE
Hardware Version	01.00.01
Software Version	01.04.11
Calibration Time	4/25/2019 1:39:32 PM

Below the table are two sections for report configuration:

- Report Name:** An empty text input field.
- Report Time:** A group of radio buttons for selecting the time interval: Last Day (selected), Last Week, Last Month, Special, Last Year, Last 3 Months, Last 3 Years, and All.
- Start Date:** A date input field with the placeholder text 'Enter date'.
- End Date:** A date input field with the placeholder text 'Enter date'.
- Report Types:** A list of checkboxes for selecting report types: Event Log (checked), Profile Log, Current Log, Voltage Log, Power Log, THD Log, and Temperature Log.

At the bottom of the window, there are two buttons: 'Connect to New Device' and 'Read Logs'. A gear icon is located in the bottom-left corner.

The information in the fields below comes directly from the device after the connection is done. Therefore, no changes can be made in this section.

**Name:** The name given to the device connection on the connection screen.

**Serial Number:** Serial number information assigned in the production of the device.

**Model:** Model information of the device.

**Hardware Version:** The version information of the hardware inside the device.

**Software Version:** The version information of the embedded software installed in the device.

**Note:** This version information is not related to Log reader program version.

**Calibration Time:** The calibration time information of the device.

The following fields are set by the user according to the desired report.

**Report Name:** The report to be produced can be named by the user. It is not mandatory to fill this field. Reports produced in this case of not being filled are given a unique name.

**Report Time:** The time interval of the report to be produced is selected from this section. Last 1 day, last 1 week, last 1 month, last 3 months, last 1 year, last 3 years or Special is selected as a time interval and a report is created accordingly.

When you mark **Special**, the calendar just below it becomes active. The report is created by selecting the start and end dates for the report from this calendar.

**Report Types:** The desired report types are selected here. Log types kept by the device are included in this list. For example, some of our model devices only have an event log. For these devices, only the event log will be on the list.

The event log is selected by default in this list and cannot be removed. Event logs are read by default in each log reading process

**Connect to New Device:** When this button is pressed, the operations are canceled and the device connection screen on the main menu of the program is returned.

**Read Logs:** Pressing this button starts log reading process according to selected report time and report type.

## 5.1 Report Screen

Sample report screen is as follow.

Start Time	End Time	Duration (sec)	Cycle	Type	Source	Parameter	Description
3/23/2020 12:11:12 AM	3/23/2020 12:11:12 AM	0	1	Swell	High Phase :1	None	L1Max Value : 258.2 L2Max Value : 258.5 L3Max Value : 258.4 Swell Level : 258.4
3/23/2020 12:11:14 AM	3/23/2020 12:11:14 AM	0	2	Swell	High Phase :2	None	L1Max Value : 258.3 L2Max Value : 258.4 L3Max Value : 258.4 Swell Level : 258.4
3/23/2020 12:11:15 AM	3/23/2020 12:11:15 AM	0	1	Swell	High Phase :3	None	L1Max Value : 258.3 L2Max Value : 258.2 L3Max Value : 258.4 Swell Level : 258.4
3/23/2020 12:11:17 AM	3/23/2020 12:11:17 AM	0	1	Swell	High Phase :123	None	L1Max Value : 258.4 L2Max Value : 258.4 L3Max Value : 258.5 Swell Level : 258.4
3/23/2020 12:11:18 AM	3/23/2020 12:11:18 AM	0	1	Swell	High Phase :1232	None	L1Max Value : 258.8 L2Max Value : 258.8 L3Max Value : 258.9 Swell Level : 258.4
3/23/2020 12:12:22 AM	3/23/2020 12:12:22 AM	0	1	Swell	High Phase :3	None	L1Max Value : 258.3 L2Max Value : 258.3 L3Max Value : 258.4 Swell Level : 258.4
3/23/2020 12:12:23 AM	3/23/2020 12:12:23 AM	0	1	Swell	High Phase :3	None	L1Max Value : 258.3 L2Max Value : 258.3 L3Max Value : 258.5 Swell Level : 258.4
3/23/2020 12:12:24 AM	3/23/2020 12:12:24 AM	0	1	Swell	High Phase :123	None	L1Max Value : 258.5 L2Max Value : 258.5 L3Max Value : 258.6 Swell Level : 258.4
3/23/2020 12:12:25 AM	3/23/2020 12:12:25 AM	0	1	Swell	High Phase :3	None	L1Max Value : 258.3 L3Max Value : 258.5 L3Max Value : 258.5 Swell Level : 258.4
3/23/2020 12:12:25 AM	3/23/2020 12:12:25 AM	1	1	Swell	High Phase :23	None	L1Max Value : 258.3 L2Max Value : 258.4 L3Max Value : 258.5 Swell Level : 258.4
3/23/2020 12:12:28 AM	3/23/2020 12:12:28 AM	0	1	Swell	High Phase :3	None	L1Max Value : 258.3 L2Max Value : 258.3 L3Max Value : 258.4 Swell Level : 258.4
3/23/2020 12:13:33 AM	3/23/2020 12:13:33 AM	0	1	Swell	High Phase :3	None	L1Max Value : 258.2 L2Max Value : 258.3 L3Max Value : 258.4 Swell Level : 258.4
3/23/2020 12:13:35 AM	3/23/2020 12:13:35 AM	0	1	Swell	High Phase :3	None	L1Max Value : 258.2 L2Max Value : 258.3 L3Max Value : 258.4 Swell Level : 258.4
3/23/2020 12:13:36 AM	3/23/2020 12:13:36 AM	0	1	Swell	High Phase :3	None	L1Max Value : 258.3 L2Max Value : 258.3 L3Max Value : 258.4 Swell Level : 258.4
3/23/2020 12:13:37 AM	3/23/2020 12:13:37 AM	0	1	Swell	High Phase :123	None	L1Max Value : 258.5 L2Max Value : 258.5 L3Max Value : 258.6 Swell Level : 258.4
3/23/2020 12:13:38 AM	3/23/2020 12:13:38 AM	0	1	Swell	High Phase :3	None	L1Max Value : 258.3 L2Max Value : 258.2 L3Max Value : 258.4 Swell Level : 258.4
3/23/2020 12:13:39 AM	3/23/2020 12:13:39 AM	0	1	Swell	High Phase :123	None	L1Max Value : 258.4 L2Max Value : 258.4 L3Max Value : 258.6 Swell Level : 258.4
3/23/2020 12:14:40 AM	3/23/2020 12:14:40 AM	0	1	Swell	High Phase :123	None	L1Max Value : 258.4 L2Max Value : 258.4 L3Max Value : 258.5 Swell Level : 258.4
3/23/2020 12:14:41 AM	3/23/2020 12:14:41 AM	0	1	Swell	High Phase :3	None	L1Max Value : 258.2 L2Max Value : 258.3 L3Max Value : 258.4 Swell Level : 258.4
3/23/2020 12:14:42 AM	3/23/2020 12:14:42 AM	0	1	Swell	High Phase :3	None	L1Max Value : 258.2 L2Max Value : 258.3 L3Max Value : 258.4 Swell Level : 258.4
3/23/2020 12:15:59 AM	3/23/2020 12:15:59 AM	0	1	Swell	High Phase :3	None	L1Max Value : 258.3 L2Max Value : 258.3 L3Max Value : 258.5 Swell Level : 258.4
3/23/2020 12:22:01 AM	3/23/2020 12:22:01 AM	0	1	Swell	High Phase :3	None	L1Max Value : 258.3 L2Max Value : 258.2 L3Max Value : 258.4 Swell Level : 258.4
3/23/2020 4:06:22 AM	3/23/2020 4:06:22 AM	0	1	Swell	High Phase :3	None	L1Max Value : 258.3 L2Max Value : 258.5 L3Max Value : 258.4 Swell Level : 258.4
3/23/2020 4:32:35 AM	3/23/2020 4:32:35 AM	0	1	Swell	High Phase :3	None	L1Max Value : 258.3 L2Max Value : 258.3 L3Max Value : 258.4 Swell Level : 258.4

In the log reading process, you can see which log type and how much is estimated in the progress bar on the tabs.

If “open file after successful save” option is selected in report settings menu, the report document produced automatically opens when the log type is finished reading.

If “connect to new device” button is clicked while the process is continuing, the reading process ends and the screen returns to the main screen, that is the connection screen of the device.

When you click Exit button, “Are you sure you want to exit?” question comes out. When this is confirmed, the log reading process is canceled, and the program is exited.

## 6. Connection Problems

When there is a problem with the device connection;

- 1) Make sure that the device information on the main screen is correct. Depending on the connection type selected, the parts to be controlled vary.
  - For TCP/IP connection, IP address, TCP port and NAD,
  - For serial connection, Communication port and Bandwidth should be checked.
- 2) If the connection information is correct, timeout and delay time in Connection Settings menu should be gradually increased and attempted to reconnect.

**ENTES Elektronik Cihazlar Imalat ve Ticaret A.S.**

**Adr:** Dudullu OSB; 1. Cadde; No:23 34776  
Umraniye - ISTANBUL / TURKIYE

**Tel:** +90 216 313 01 10 **Fax:** +90 216 314 16 15

**E-mail:** contact@entes.eu **Web:** www.entes.eu

**Call Center Technical Support:** 0850 888 84 25