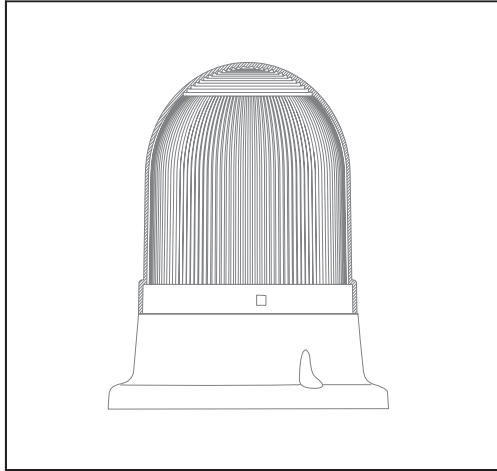
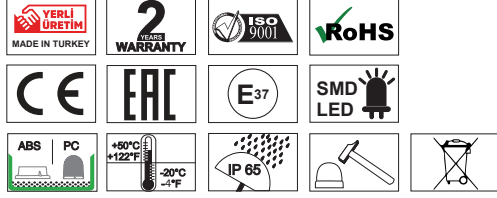


SNT - 100 SERİSİ / SERIES
MODEL: 110 - 120



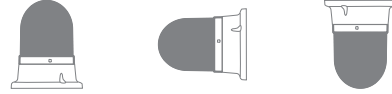
MUCCO
WARNING LAMPS



- Ürünün Bağlantısı En Az Elektrik Teknisyenleri Tarafından Yapılmalıdır.
- Ürün İç Ve Dış Mekanda Kullanılabilir.
- Ürünün İç Ve Dış Mekana Uyumluluğu Resimdeki Gibidir.
- Ürün Titreşim Ve Isının En Az Olduğu Yere Montaj Edilmelidir.

- Electrical connection must be carried out at least by trained electrical specialists.
- The product can be used indoors and outdoors.
- The interior and exterior compatibility of the product is like the picture.
- The product should be installed where the vibration and heat is minimum.

İÇ MEKAN / INDOOR



DIŞ MEKAN / OUTDOOR



Model	Voltaj/Power Supply	Akım/Current(mA)Max.
SNT-110	12V/DC	140mA
SNT-110-B	24V/DC	144mA
SNT-120	220V/AC	330mA
SNT-120-B	220V/AC	240mA

Melodi/Melody	Ses Şiddeti /Sound Intensity(dB) (10cm) Min - Max	Ses Şiddeti /Sound Intensity(dB)(1m) Min - Max
M1	87-95	73-81
M2	66-97	65-84
M3	85-97	79-88
M4	95-103	80-91
M5	77-94	70-87
M6	95-105	84-97
M7	90-99	80-91
M8	95-100	75-82
M9	103-105	88-94
M10	65-102	59-96
M11	0	0

* Değerler +/- %5 değişiklik gösterebilir.

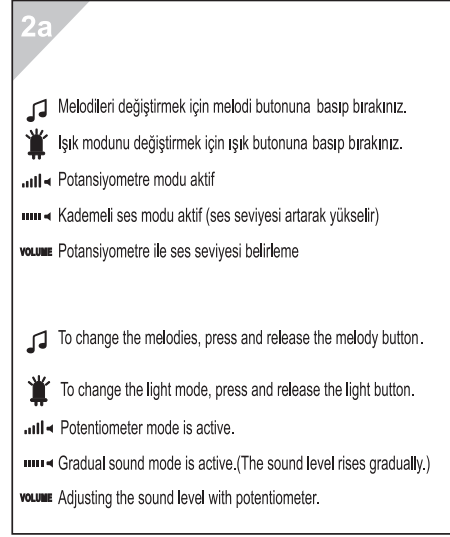
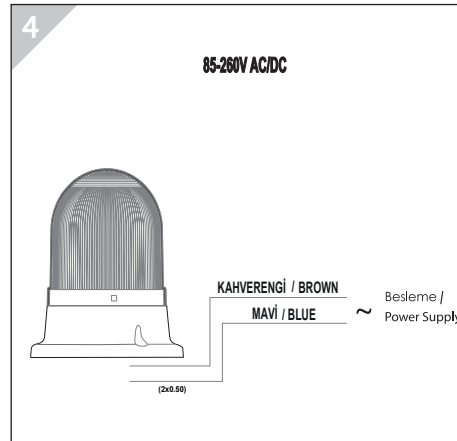
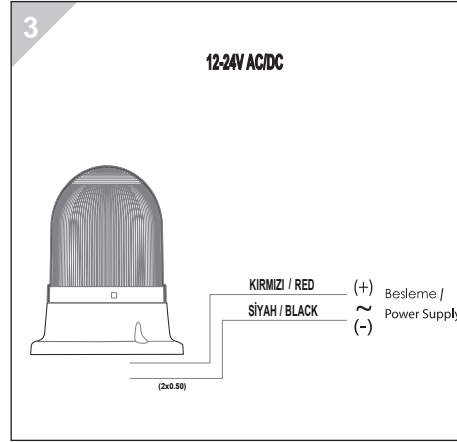
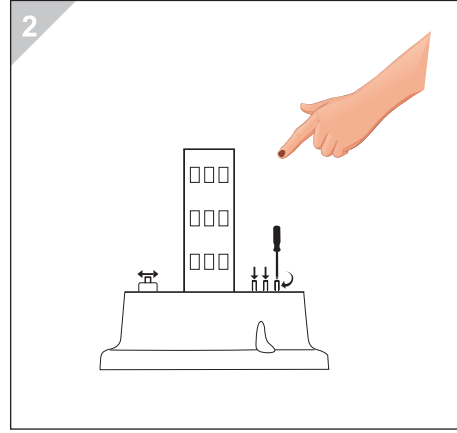
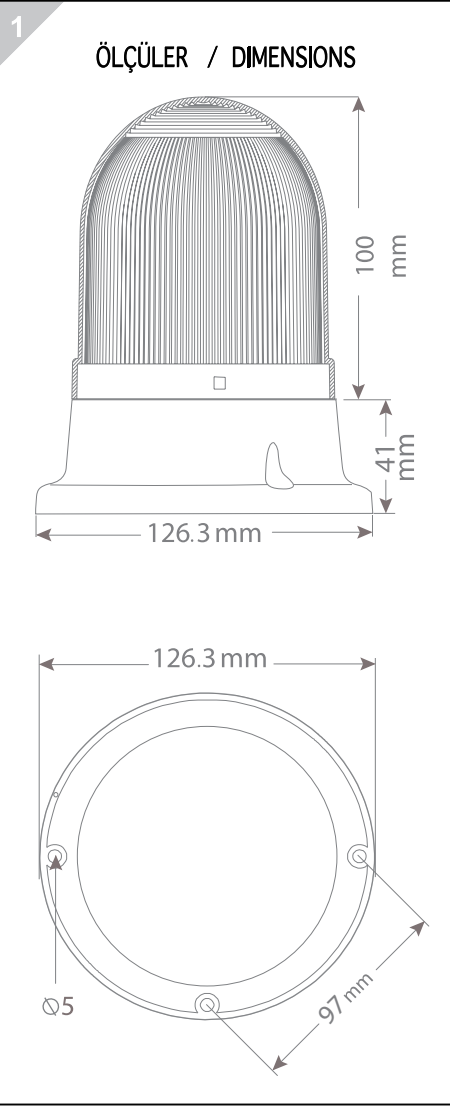
* Values may vary by +/- %5.

Model	Ağırlık/Weight	Renk/Color
SNT-110	337gr	(1) Kırmızı/Red (3) Sarı/Yellow
SNT-110-B	352gr	
SNT-120	394gr	
SNT-120-B	410gr	

Epilepsi hastalığı olanların kullanmaması önerilir.
It is recommended that people with epilepsy should not use it.

SİNYALTEKNİK ELEKTRİK OTOMASYON İTH. İHR. SAN ve TİC. LTD. ŞTİ
İkitelli O.S.B. Giyim Sanatkarları San. Sit.
2. Ada C Blok No: 122 Başakşehir / İstanbul
Tel. +90 (212) 292 47 48 / Faks. +90 (212) 292 47 46
www.mucco.com.tr

MUCCO
WARNING LAMPS



YEDEK PARÇALAR / SPARE PARTS



SNT-100LT



SNT-100KFS